

ORDINANCE NO. 2021-05

AN ORDINANCE ESTABLISHING NEW WARD BOUNDARIES WITHIN THE CITY OF GASSVILLE, ARKANSAS, DECLARING AN EMERGENCY TO EXIST AND FOR OTHER PURPOSES.

WHEREAS: The City Council of the City of Gassville, Arkansas in accordance with ACA 14-44-102 Redistricting of wards, has determined that because of the 2020 census of the City of Gassville, Arkansas the ward boundaries as they exist now do not meet the requirement set forth by the United States Supreme Court that all wards must not have a population difference of more than 5% (five percent).

NOW, THEREFORE, BE IT ORDAINED BY THE CITY COUNCIL OF THE CITY OF GASSVILLE, ARKANSAS:

SECTION 1. That the City Council of the City of Gassville, Arkansas does hereby establish new ward boundaries as described in the attached "EXHIBIT A" (New Ward Boundary Maps) census geographic territory (legal description), demographics and populations of each ward.

SECTION 2. REPEAL This ordinance repeals any ordinance or parts thereof that conflict with this ordinance.

SECTION 3. EMERGENCY Arkansas is a voter identification card required state and that county clerk's are in need of ward boundary map changes as soon as possible for continuity of the election process in 2022, an emergency is hereby declared and this ordinance shall be in full force and effect by the date of adoption below.

ADOPTED THIS 21,ST DAY OF DECEMBER 2021.

APPROVED:

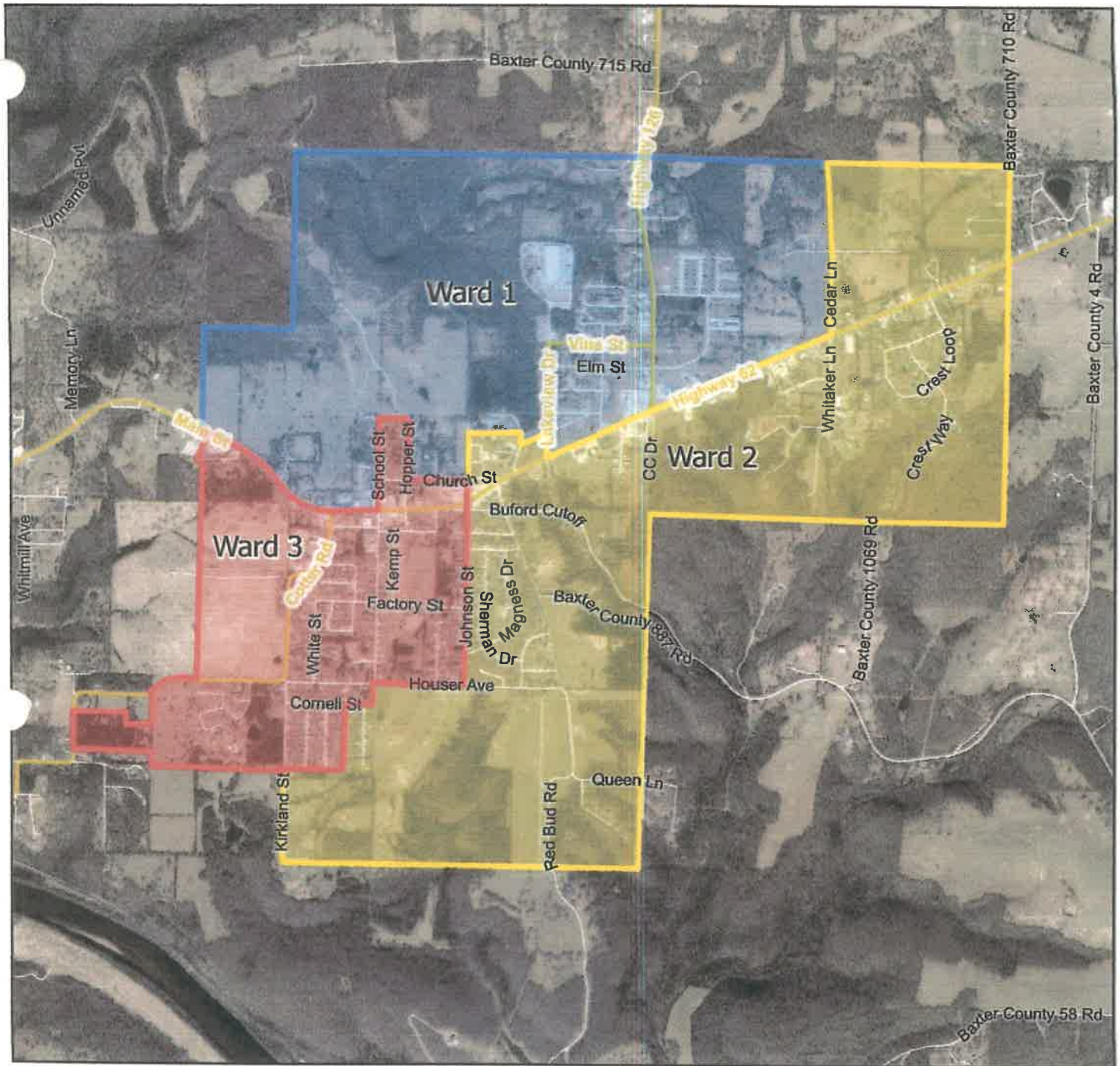
Jeff Braim
JEFF BRAIM, MAYOR

ATTEST:

Jeff Lewis
JEFF LEWIS, RECORDER/TREASURER

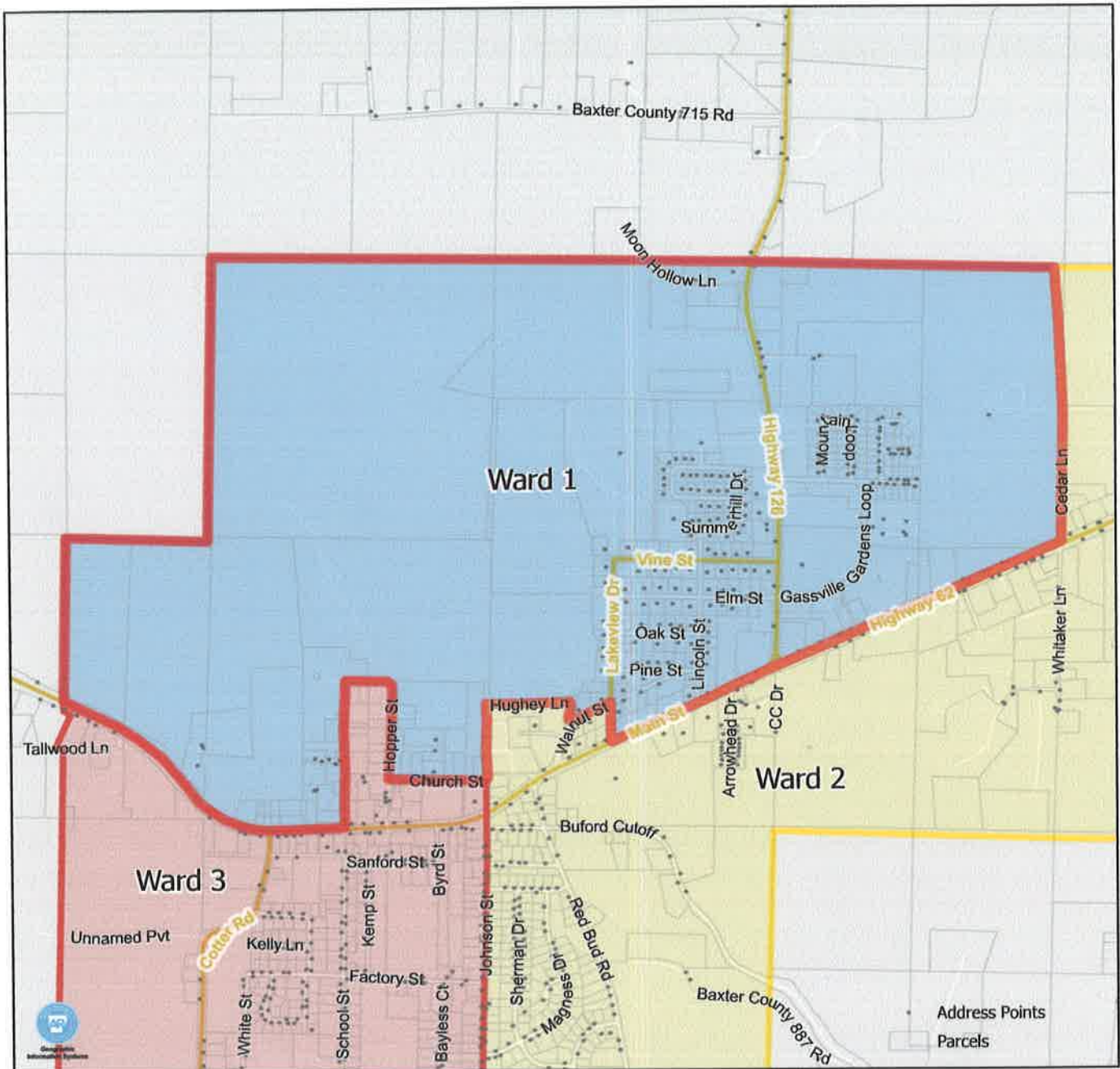


Gassville Ward Proposal - 2



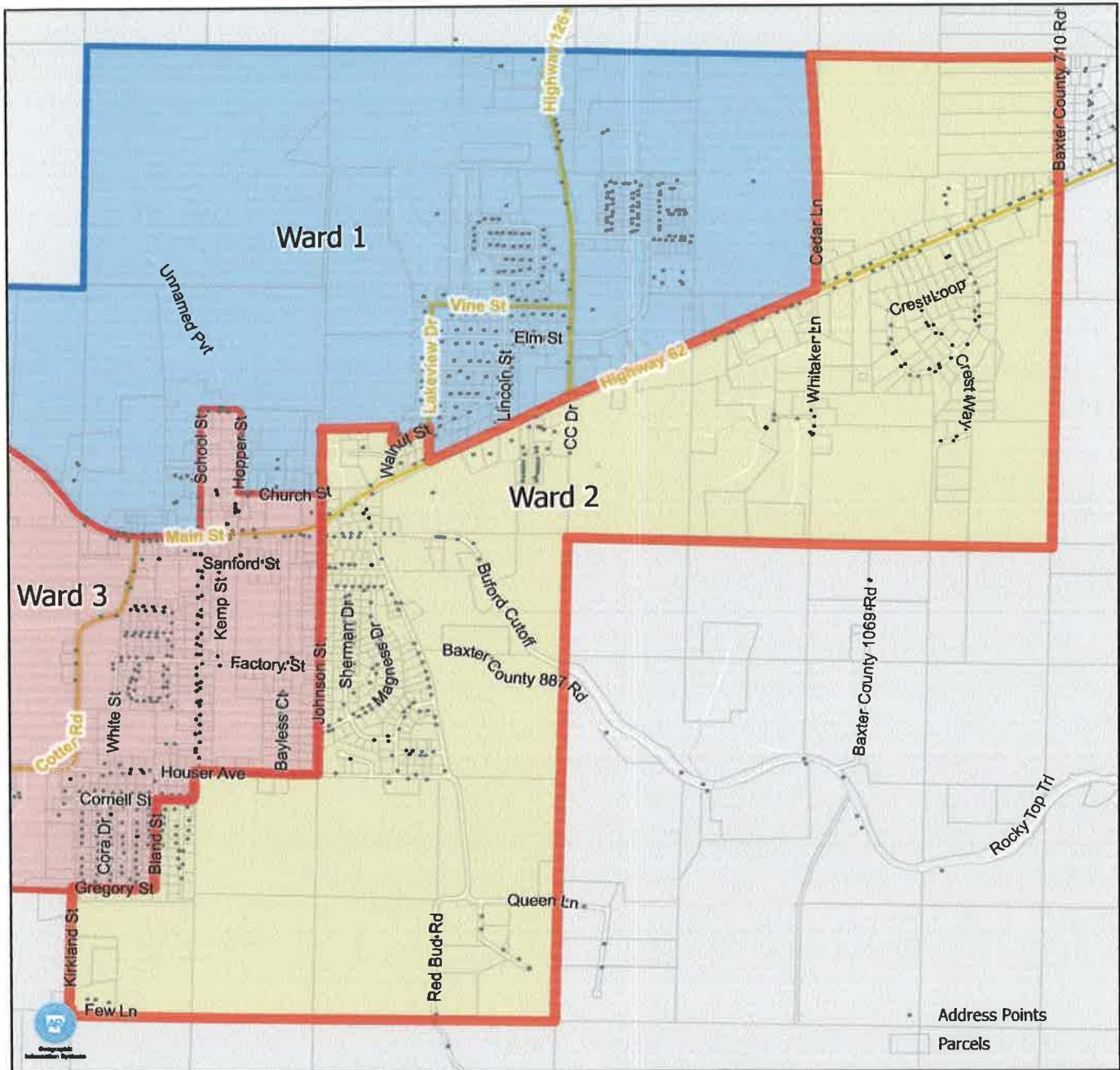
DISTRICT	Total Population Tabulation				Racial Demographics as a Percent of Total Population				
	All Persons	Target	Dev.	Difference	White	Black	Hispanic	Minority	
1	726	724	0.33%	✓	2	91.74%	0.28%	2.20%	8.26%
2	718	724	-0.77%	✓	-6	88.86%	0.00%	3.06%	11.14%
3	727	724	0.47%	✓	3	87.35%	0.41%	4.13%	12.65%
Assigned	2171								
Total Pop	2171								
Unassigned	0								

Exhibit 2 - Ward 1



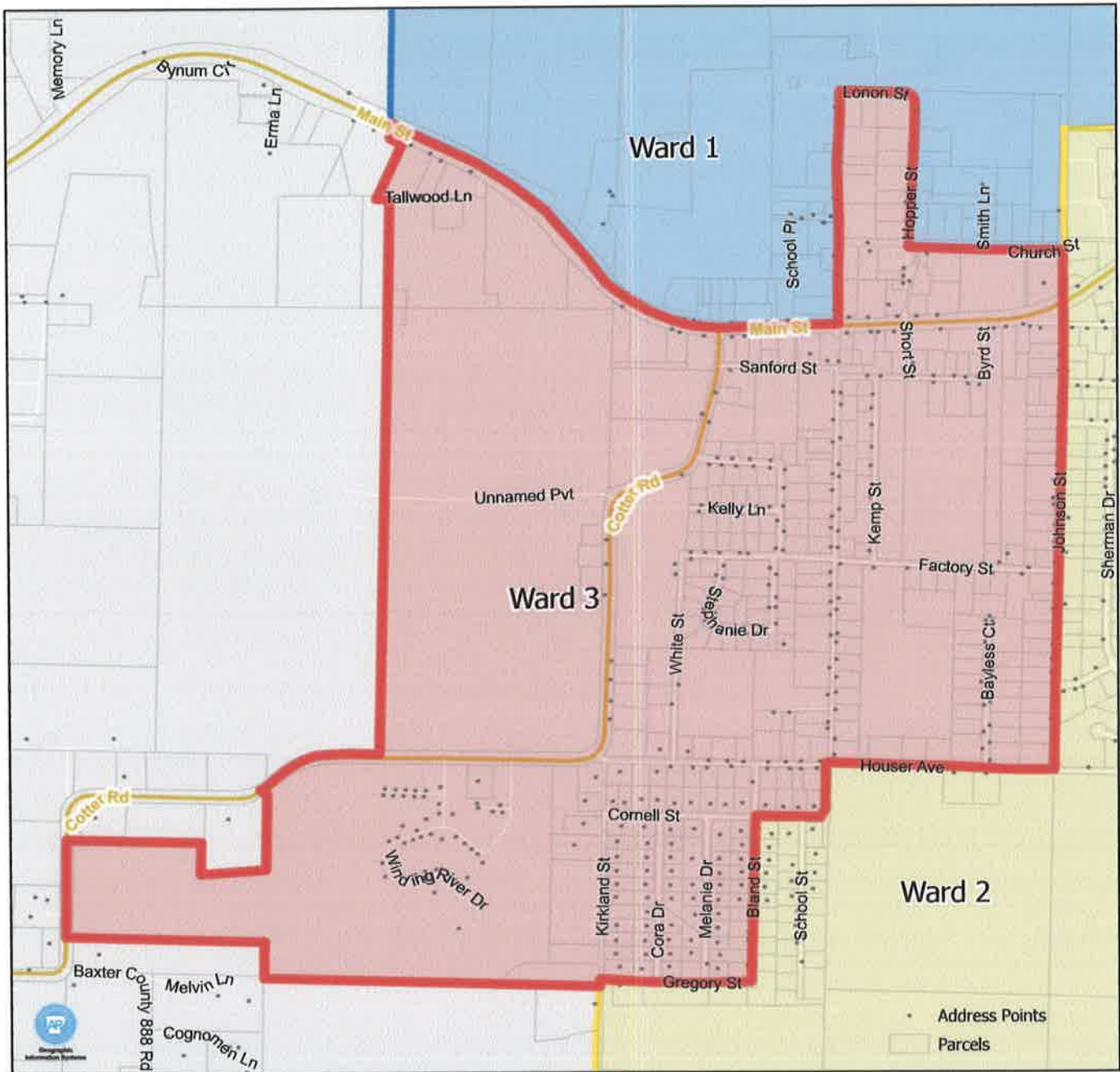
Ward	Total Population Tabulation				Racial Demographics as a Percent of Total Population			
	All Persons	Target	Dev.	Difference	White	Black	Hispanic	Minority
1	726	724	0.33%✓	2	91.74%	0.28%	2.20%	8.26%
2	718	724	-0.77%✓	-6	88.86%	0.00%	3.06%	11.14%
3	727	724	0.47%✓	3	87.35%	0.41%	4.13%	12.65%
Assigned	2171							
Total Pop	2171							
Unassigned	0							

Exhibit 3 - Ward 2



Ward	Total Population Tabulation				Racial Demographics as a Percent of Total Population			
	All Persons	Target	Dev.	Difference	White	Black	Hispanic	Minority
1	726	724	0.33%✓	2	91.74%	0.28%	2.20%	8.26%
2	718	724	-0.77%✓	-6	88.86%	0.00%	3.06%	11.14%
3	727	724	0.47%✓	3	87.35%	0.41%	4.13%	12.65%
Assigned	2171							
Total Pop	2171							
Unassigned	0							

Exhibit 4 - Ward 3



Ward	Total Population Tabulation				Racial Demographics as a Percent of Total Population			
	All Persons	Target	Dev.	Difference	White	Black	Hispanic	Minority
1	726	724	0.33%✓	2	91.74%	0.28%	2.20%	8.26%
2	718	724	-0.77%✓	-6	88.86%	0.00%	3.06%	11.14%
3	727	724	0.47%✓	3	87.35%	0.41%	4.13%	12.65%
Assigned	2171							
Total Pop	2171							
Unassigned	0							